

Installation & Operating Instructions

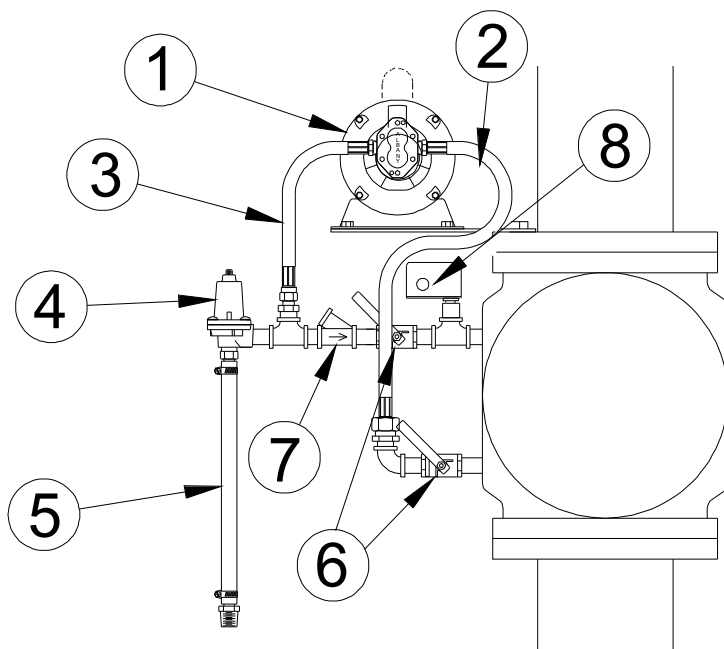
Series CEP-93 & CEP-86

Albany Excess Pressure Pump Unit

1. The CEP Series pump unit supplied is intended to handle clean liquid only at a temperature of 10 C to 70 C. For service other than that indicated, please consult the factory.
2. Before installing, examine the carton and the contents to determine if damage has occurred during shipping and handling. Any pump, motor or accessory which shows an indication of damage should be returned to the supplier in the same carton in which it was supplied. **Do not** attempt to adjust or repair. Damage to any pump in transit or in handling is not covered under the factory warranty.
3. The pump unit may be installed either **Horizontally** or **Vertically** (with pump end Down) on the mounting plate supplied with the package.
4. See arrows on the pump which indicate the direction of flow. Connect Inlet hose with Strainer (2) to pump suction and copper discharge tube to pump discharge so that the flow of liquid is in the direction of these arrows.
5. **IMPORTANT:** When installing both the suction hose & discharge tube, avoid any sharp bends which might cause a kink in the hose or tubing.
6. Pipe the inlet to the relief valve (Item 4) in the system as per the INLET tag. Valve outlet should be piped to drain.
7. The standard electric motor supplied is 60 Cycle, 115 Volts Open Drip-proof Enclosure. Other enclosures and voltages are available to suit specific applications. On all motors the electric supply must be wired through a **manual switch** (not supplied). For motors with no automatic thermal overload indicated, the manual switch must be fitted with a proper overload device rated for the amperage shown on the motor name plate. For all motors having a **voltage greater than 130**, consult with an qualified electrician regarding the proper electrical connection. Use electric **wire of sufficient size** to carry the full load current as shown on the motor name plate.
8. The standard pump supplied is rated for a **differential pressure of 100 P.S.I.** and a **maximum combined pressure of 150 P.S.I.**. The adjustable relief valve (Item 4), supplied with the package, is factory set at 130 P.S.I..
9. **INSTALL** a suitable CHECK VALVE (Item 7 - not supplied) in the pump discharge line as shown.
10. On all installations, suitable SHUT OFF VALVES (Item 6 - not supplied) must be installed as shown below to isolate the pump for servicing. On systems which are being operated manually, these valves must be **KEPT CLOSED at all times** except when the system is being charged under the supervision of qualified personnel.
11. **IMPORTANT:** For systems that are intended to **OPERATE AUTOMATICALLY**, and the shut off valves are left in the open position, it is necessary to install the **copper tube outlet assembly** supplied with the package.

MAINTENANCE

All Albany Series CEP-93 **Excess Pressure Pumps** are designed to operate **without need of servicing** or adjustments. **No lubrication is necessary.** The **Pump** is equipped with self-lubricating carbon bearings and a seal type packing which requires **no adjustment.** The **Electric Motor** is fitted with **pre-lubricated** ball bearings.



- 1) Pump/Motor Unit w/ Mounting Plate
- 2) Inlet Hose - long w/ strainer
- 3) Discharge Tube - short
- 4) Adjustable Relief Valve preset to 130 PSI

OPTIONS

- 5) Sight flow tube
- 6) SHUT-OFF-VALVES
- 7) Check Valve
- 8) Pressure Switch