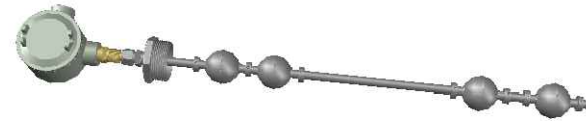
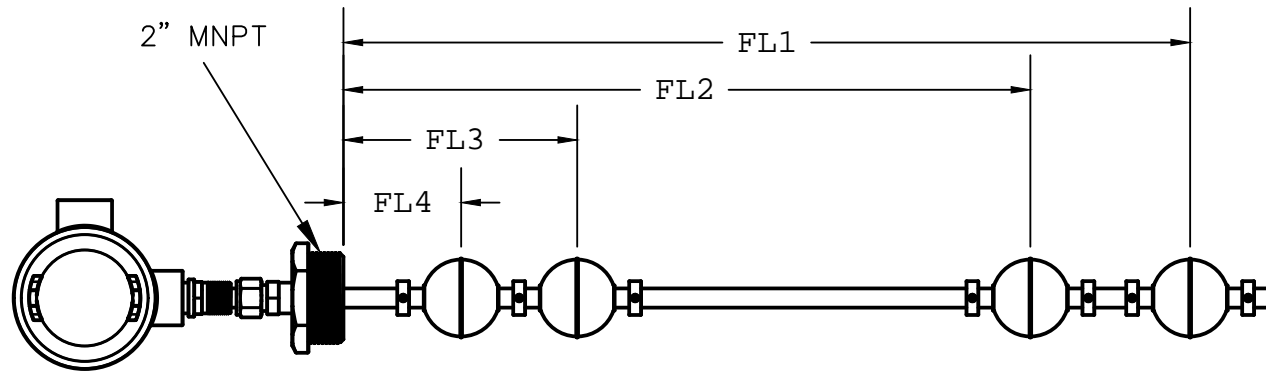




OVERFILL PROTECTION DEVICE
MH61303
CAN/ULC05661-10



Class I Division 1 and 2, Groups A,B,C,D,T5



HOUSING: Nema 4X, Explosion Proof, Class 1, Div 1, Group C & D

MAXIMUM PRESSURE: 150 PSI

OPERATING TEMPERATURE: -20F ~ 250F

FLOAT MATERIAL: Stainless Steel

Switch Certified To:

CAN/CSA STD. C22.2 NO. 1010-1

CAN/CSA STD. C22.2 NO. 30

Conforms To:

UL1203 & ANSI/ISA S82-03

FLOAT LEVEL	FL1	FL2	FL3	FL4	ALBANY PUMP CO. LTD.	
FUNCTION	LOW LEVEL ALARM	HIGH LEVEL ALARM/ START PUMP	HIGH LEVEL ALARM/ STOP PUMP	HIGH LEVEL ALARM	DRWN. SMB	420 HARRY WALKER PARKWAY NEWMARKET, ONT. CANADA L3Y 8P5
HEIGHT FROM BOTTOM OF TANK (% OF TANK DEPTH)	%	%	%	%	SCALE NONE	FUEL OIL ACCESSORIES LEVCON 4
NORMALLY OPEN (NO)/ NORMALLY CLOSED (NC)	NC	NC	NC	NC	CHK'D	
WIRE COLOUR	BROWN	BLUE	GREEN	RED	This drawing and the information depicted therein is the property of Albany Pump Co. Ltd. Copies are issued in strict confidence and shall not be reproduced, copied or used as the basis for the manufacture or sale of products without prior written permission of Albany Pump Co.	